



***Product  
Catalogue***  
[www.iginés.com](http://www.iginés.com)



*Add value to your living environment...*





## CONTENTS

- 6-13 **Modular Water Storage System**
- 14-29 **Fire Cabinets**
- 30-41 **Seperators**
- 42-45 **Towel Radiators (Heated Towel Rack)**
- 46 **Collector Cabinets**

## ABOUT US

Founded in 2012 with the commercial title of **ROKNES Isı End. Yapı Mlz. İnş. Industry and Trade L.L.C** with 17 years experience in the field of heating and mechanical installation, operates in the field of product supply to the leading mechanical and engineering companies in the sector.

Knowledge and experience in commercial and engineering fields, we continue our activities with the production of modular water storage, fire Cabinet, towel radiator (towel), separator and Collector Cabinet with **IGINES** brand which was created in 2014.

Every stage of our production we have a machine park equipped with the latest technological systems and our products are produced with advanced production techniques.

The use of world-class technology is indispensable for **IGINES**. Our expert R & D team, we always aim for the best quality, the most robust and the most durable in our products. We follow technology and innovation closely.

Paying attention to delivery time with customer satisfaction perception and excellent after-sales service is one of our basic principles.

Thus, **IGINES** is not a company that provides customers a one-off product; it has become a stable and reliable solution partner that meets all their expectations.



# MODULAR WATER STORAGE SYSTEMS

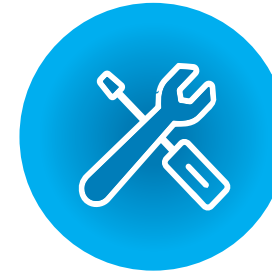
## FEATURES OF MODULAR WATER STORAGE SYSTEMS

**Significant differences that distinguish modular water storage systems from other water tanks;**

- It is transported to the place as parts where it will be installed and designed to pass through the narrowest spaces and produced according to the size, location and required water storage capacity.
- If needed, the tank volume can be increased in place or disassembled and easily reinstalled elsewhere.
- Modular water tank is manufactured in modular parts using stainless, Inox and galvanized materials, without using harmful chemicals, no odour, no bacteria, hygienic properties, desired tonnage. Ensure that the water which is one of the most important essentials of life, stored and protected under reliable and healthy conditions.







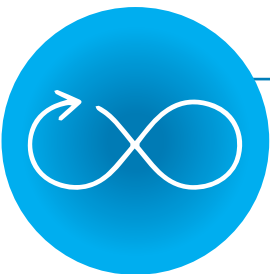
### MAINTENANCE AND REPAIR

The cleaning and maintenance cover located on the side of the modular water tanks allows easy maintenance and repair of the tank. In case of damage to the modular water tank, damaged panels are easily replaced with new ones and restored. The process of emptying the tank is easily carried out through the drain valve located on the tank.



### TRANSPORT AND ASSEMBLY

The fact that the product is in modules ensures that it is easy to carry and the cost of transportation is economical. The installation of the tank is made by tightening with the appropriate bolt according to Inox or galvanized type. When desired, it can be easily removed and installed in another place. When needed, the volume of the water tank can be higher by increasing the number of modules according to the availability of the space. The product pieces can be easily moved from doors and narrow spaces.



### DURABLE

All parts are produced in our factory and the modules are formed in high pressure presses. Water storage systems made with modules require welding process, so they have a long service life without the risk of swelling and explosion.



### HYGIENE

Due to the smooth and shiny surface of the modules that make up the modular water storage system, the tank surface does not retain dirt, dreck and does not contain bacteria. The formation of any algae is not possible, as there is no light leakage in the tank. The panels that make up the modular tank are made of stainless inox or galvanized steel sheets, which are the most sanitary material in the food industry and in the storage of drinking water. Modular water tanks are designed in such a way that dust and foreign objects cannot enter.



### IMPERMEABILITY

Impermeability of modular water tanks is provided with seals specially manufactured for modular water tanks, selected for product type and purpose. Since these flexible seals are very well adapted to each other, tanks do not even leak in large temperature changes.





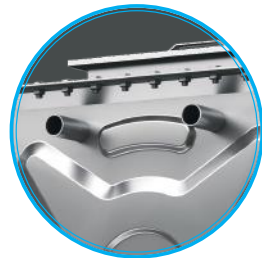
## MODULAR WATER TANK DETAILS



• Ladder



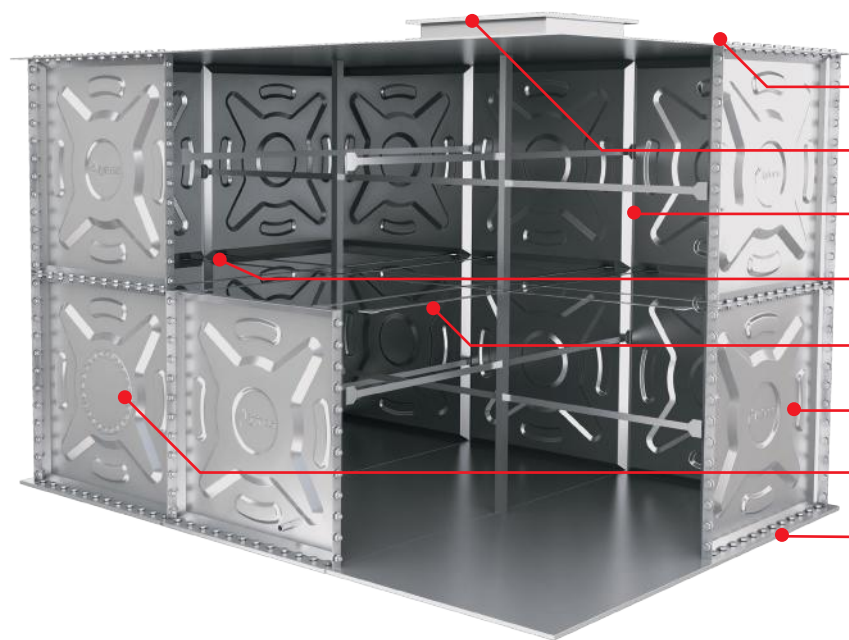
• Water outlet  
• Drain outlet



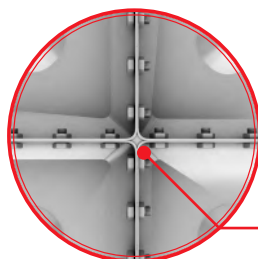
• Water inlet  
• Overflow outlet



• Level indicator

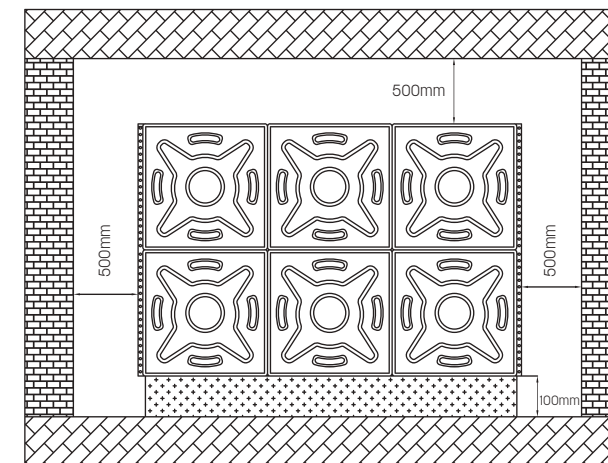


- Air Intake
- Top Cover
- Vertical Carrier Profile
- Guy Leg Tension Shoe
- Horizontal Carrier Profile
- Modules
- Cleaning Hatch
- Concrete Block

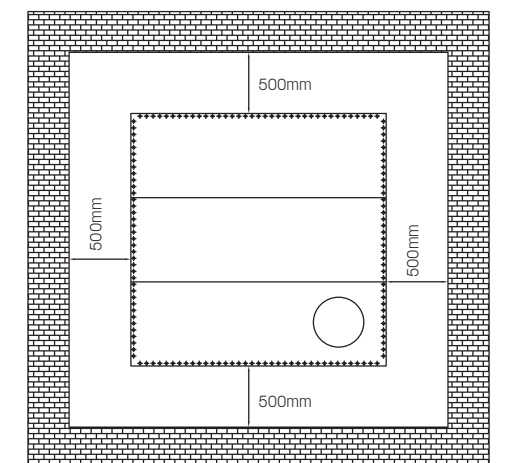


○ Connection Details

### WATER TANK LAYOUT SCHEME



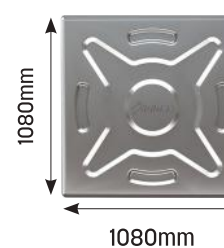
Frontal View



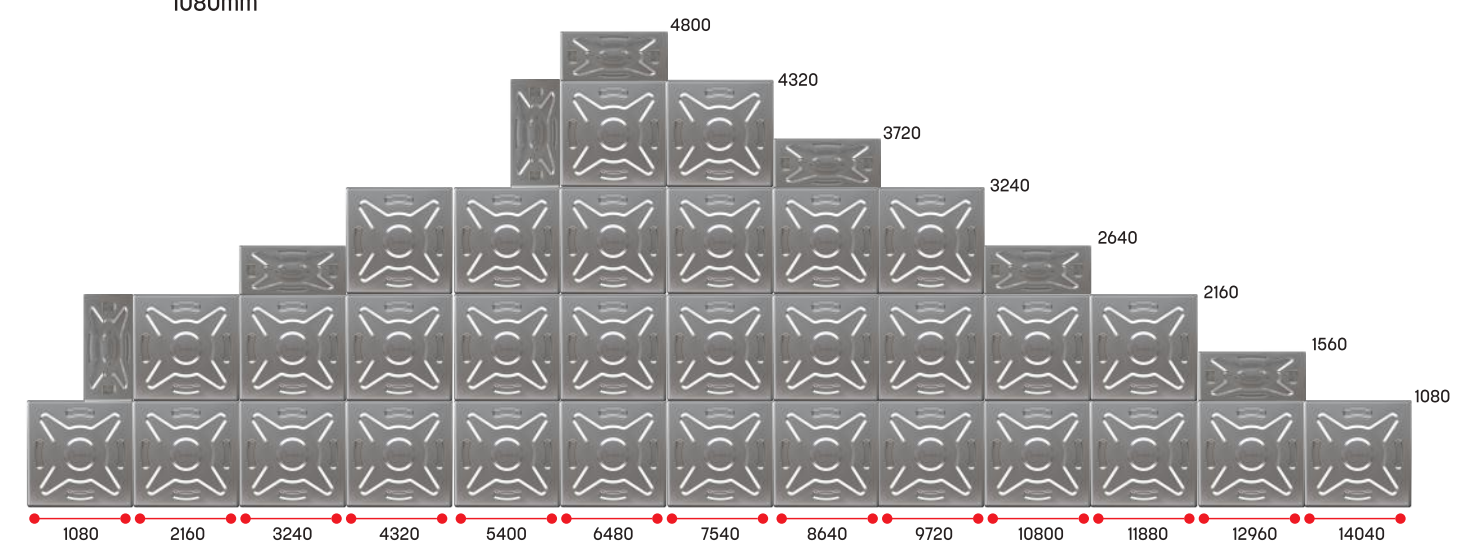
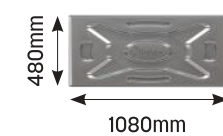
Top View

### WATER TANK CAPACITY SELECTION

Standard Panel



Half Panel





CAPACITY TABLE OF PRISMATIC MODULAR WATER TANKS

CODE	CAPACITY	WIDTH	LENGTH	HEIGHT	CODE	CAPACITY	WIDTH	LENGTH	HEIGHT
İMD 1	625 lt	480 mm	1080 mm	1080 mm	İMD 27	45000 lt	3240 mm	6480 mm	2160 mm
İMD 2	1250 lt	1080 mm	1080 mm	1080 mm	İMD 28	45000 lt	3240 mm	4320 mm	3240 mm
İMD 3	2500 lt	1080 mm	2160 mm	1080 mm	İMD 29	50000 lt	3240 mm	5400 mm	2160 mm
İMD 4	2500 lt	1080 mm	1080 mm	2160 mm	İMD 30	56500 lt	3240 mm	5400 mm	3240 mm
İMD 5	3750 lt	1080 mm	3240 mm	1080 mm	İMD 31	60000 lt	3240 mm	4320 mm	3240 mm
İMD 6	5000 lt	2160 mm	2160 mm	1080 mm	İMD 32	63000 lt	5400 mm	5400 mm	2160 mm
İMD 7	5000 lt	1080 mm	2160 mm	2160 mm	İMD 33	75000 lt	5400 mm	6480 mm	2160 mm
İMD 8	6250 lt	1080 mm	5400 mm	1080 mm	İMD 34	75000 lt	4320 mm	5400 mm	3240 mm
İMD 9	6250 lt	1080 mm	2640 mm	2160 mm	İMD 35	80000 lt	4320 mm	8640 mm	2160 mm
İMD 10	7500 lt	1080 mm	3240 mm	2160 mm	İMD 36	90500 lt	6480 mm	6480 mm	2160 mm
İMD 11	7500 lt	2160 mm	3240 mm	1080 mm	İMD 37	94500 lt	5400 mm	5400 mm	3240 mm
İMD 12	10000 lt	2160 mm	2160 mm	2160 mm	İMD 38	100500 lt	5400 mm	8640 mm	2160 mm
İMD 13	12500 lt	2160 mm	2640 mm	2160 mm	İMD 39	105800 lt	4320 mm	7560 mm	3240 mm
İMD 14	12500 lt	1080 mm	5400 mm	2160 mm	İMD 40	113500 lt	5400 mm	6480 mm	3240 mm
İMD 15	15000 lt	2160 mm	3240 mm	2160 mm	İMD 41	121000 lt	6480 mm	8640 mm	2160 mm
İMD 16	17500 lt	2160 mm	3720 mm	2160 mm	İMD 42	136000 lt	6480 mm	6480 mm	3240 mm
İMD 17	20000 lt	2160 mm	4320 mm	2160 mm	İMD 43	141000 lt	7560 mm	8640 mm	2160 mm
İMD 18	22500 lt	3240 mm	3240 mm	2160 mm	İMD 44	151000 lt	5400 mm	8640 mm	3240 mm
İMD 19	25000 lt	2640 mm	4320 mm	2160 mm	İMD 45	159000 lt	6480 mm	7560 mm	3240 mm
İMD 20	25000 lt	2160 mm	5400 mm	2160 mm	İMD 46	161000 lt	8640 mm	8640 mm	2160 mm
İMD 21	26000 lt	3240 mm	3720 mm	2160 mm	İMD 47	185000 lt	7560 mm	7560 mm	3240 mm
İMD 22	30000 lt	3240 mm	4320 mm	2160 mm	İMD 48	211000 lt	7560 mm	8640 mm	3240 mm
İMD 23	34000 lt	3240 mm	3240 mm	3240 mm	İMD 49	241000 lt	8640 mm	8640 mm	3240 mm
İMD 24	34000 lt	3240 mm	4800 mm	2160 mm	İMD 50	272000 lt	8640 mm	9720 mm	3240 mm
İMD 25	37500 lt	3240 mm	5400 mm	2160 mm	İMD 51	306000 lt	9720 mm	9720 mm	3240 mm
İMD 26	40000 lt	4320 mm	4320 mm	2160 mm	İMD 52	340000 lt	9720 mm	10800 mm	3240 mm





DECORATIVE WITH TUBE COMPARTMENT  
AND GLASS LID WITH RUBBER HOSE D1CK SERIES

PRODUCT SPECIFICATIONS

- 1" fire cabinet with rubber hose connected by right, left, top or bottom inlets.
- Cabinet body, cover and hose reel made of DKP sheet metal, electrostatically painted 70 micron RAL 3001 red, RAL 9005 black or desired colour.
- 1" ball valve or 2" fire valve.
- Semi-rigid unbreakable rubber hose with a diameter of 1", 20 - 25 - 30 meters long in accordance with EN 694 E standard.
- 1" - 3 position jet spray nozzle.
- 90 + 270 degree rotating hose reel with central supply.
- Maximum working pressure of the reel is 12 bar, test pressure is 18 bar, minimum bursting pressure is 30 bar.
- Stainless lock and hinge



MODEL	HOSE	CABINET DIMENSIONS				
		Width (mm)	Height (mm)	Depth (mm)	Weight (kg)	Reel Diameter (mm)
D1CK - 20	20m	750	1000	230	31	480
D1CK - 25	25m	750	1000	230	32	480
D1CK - 30	30m	750	1000	230	34	540



DECORATIVE WITHOUT TUBE COMPARTMENT  
AND GLASS LID WITH RUBBER HOSE

DOCK SERIES



PRODUCT SPECIFICATIONS

- 1" fire cabinet with rubber hose connected by right, left, top or bottom inlets.
- Cabinet body, cover and hose reel made of DKP sheet metal, electrostatically painted 70 micron RAL 3001 red, RAL 9005 black or desired colour.
- 1" ball valve or 2" fire valve.
- Semi-rigid unbreakable rubber hose with a diameter of 1", 20 - 25 - 30 meters long in accordance with EN 694 E standard.
- 1" - 3 position jet spray nozzle.
- 90 + 270 degree rotating hose reel with central supply.
- Maximum working pressure of the reel is 12 bar, test pressure is 18 bar, minimum bursting pressure is 30 bar.
- Stainless lock and hinge



MODEL	HOSE	CABINET DIMENSIONS				
		Width (mm)	Height (mm)	Depth (mm)	Weight (kg)	Reel Diameter (mm)
DOCK - 20	20m	750	750	230	29	480
DOCK - 25	25m	750	750	230	30	480
DOCK - 30	30m	750	750	230	32	540



**SURFACE-MOUNTED WITH TUBE  
COMPARTMENT AND GLASS LID WITH  
RUBBER HOSE**

**SICK-B SERIES**



**PRODUCT SPECIFICATIONS**

- 1" fire cabinet with rubber hose connected by right, left, top or bottom inlets.
- Cabinet body, cover and hose reel made of DKP sheet metal, electrostatically painted 70 micron RAL 3001 red, RAL 9005 black or desired colour.
- 1" ball valve or 2" fire valve.
- Semi-rigid unbreakable rubber hose with a diameter of 1", 20 - 25 - 30 meters long in accordance with EN 694 E standard.
- 1" - 3 position jet spray nozzle.
- 90 + 270 degree rotating hose reel with central supply.
- Maximum working pressure of the reel is 12 bar, test pressure is 18 bar, minimum bursting pressure is 30 bar.
- Stainless lock and hinge



MODEL	HOSE	CABINET DIMENSIONS				
		Width (mm)	Height (mm)	Depth (mm)	Weight (kg)	Reel Diameter (mm)
SICK-B - 20	20m	970	760	230	36	480
SICK-B - 25	25m	970	760	230	37	480
SICK-B - 30	30m	970	760	230	39	540

**SURFACE-MOUNTED WITHOUT TUBE  
COMPARTMENT AND GLASS LID WITH  
RUBBER HOSE**

**SOCK-B SERIES**



**PRODUCT SPECIFICATIONS**

- 1" fire cabinet with rubber hose connected by right, left, top or bottom inlets.
- Cabinet body, cover and hose reel made of DKP sheet metal, electrostatically painted 70 micron RAL 3001 red, RAL 9005 black or desired colour.
- 1" ball valve or 2" fire valve.
- Semi-rigid unbreakable rubber hose with a diameter of 1", 20 - 25 - 30 meters long in accordance with EN 694 E standard.
- 1" - 3 position jet spray nozzle.
- 90 + 270 degree rotating hose reel with central supply.
- Maximum working pressure of the reel is 12 bar, test pressure is 18 bar, minimum bursting pressure is 30 bar.
- Stainless lock and hinge



MODEL	HOSE	CABINET DIMENSIONS				
		Width (mm)	Height (mm)	Depth (mm)	Weight (kg)	Reel Diameter (mm)
SOCK-B - 20	20m	730	780	230	29	480
SOCK-B - 25	25m	730	780	230	30	480
SOCK-B - 30	30m	730	780	230	32	540



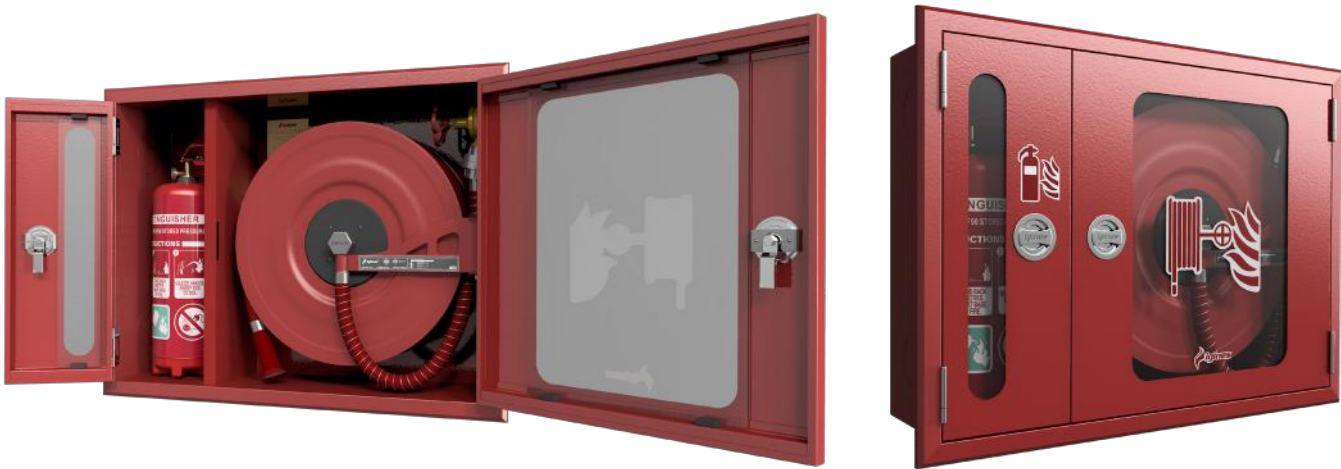
# BUILT-IN WITH TUBE COMPARTMENT AND GLASS LID WITH RUBBER HOSE

## A1CK SERIES



### PRODUCT SPECIFICATIONS

- 1" fire cabinet with rubber hose connected by right, left, top or bottom inlets.
- Cabinet body, cover and hose reel made of DKP sheet metal, electrostatically painted 70 micron RAL 3001 red, RAL 9005 black or desired colour.
- 1" ball valve or 2" fire valve.
- Semi-rigid unbreakable rubber hose with a diameter of 1", 20 - 25 - 30 meters long in accordance with EN 694 E standard.
- 1" - 3 position jet spray nozzle.
- 90 + 270 degree rotating hose reel with central supply.
- Maximum working pressure of the reel is 12 bar, test pressure is 18 bar, minimum bursting pressure is 30 bar.
- Stainless lock and hinge



CABINET DIMENSIONS									
MODEL	HOSE	CASE DIMENSION			DIMENSION INCLUDING SILL			Weight (kg)	Reel Diameter (mm)
		Width (mm)	Height (mm)	Depth (mm)	Width (mm)	Height (mm)	Depth (mm)		
A1CK - 20	20m	900	650	230	960	710	230	33	480
A1CK - 25	25m	900	650	230	960	710	230	34	480
A1CK - 30	30m	900	650	230	960	710	230	35	540



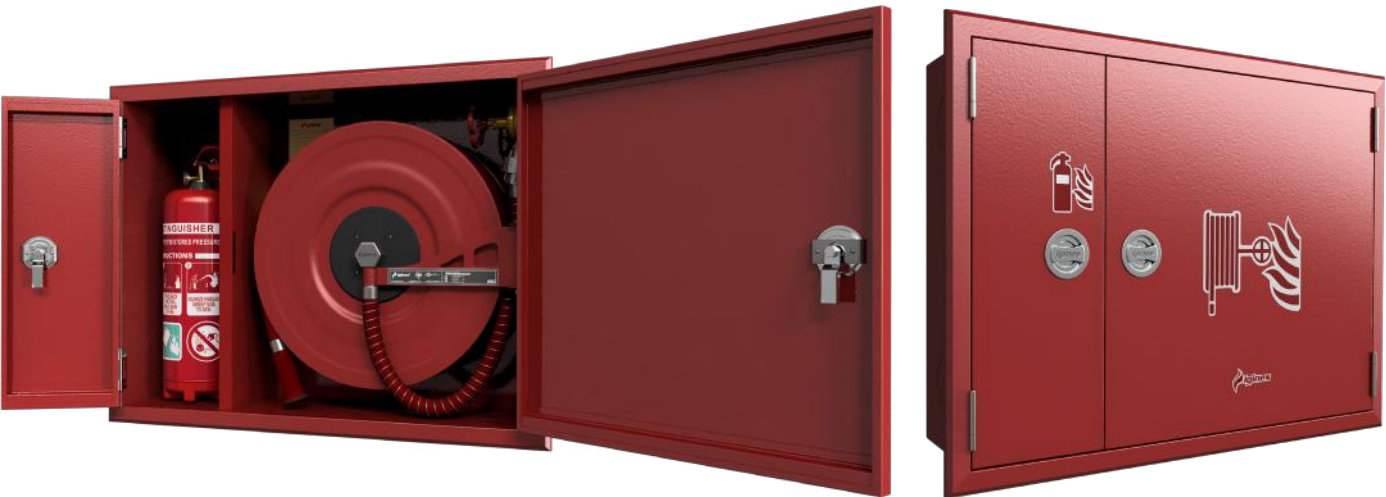
BUILT-IN WITH TUBE COMPARTMENT  
AND SHEET LID WITH RUBBER HOSE

AISK SERIES



PRODUCT SPECIFICATIONS

- 1" fire cabinet with rubber hose connected by right, left, top or bottom inlets.
- Cabinet body, cover and hose reel made of DKP sheet metal, electrostatically painted 70 micron RAL 3001 red, RAL 9005 black or desired colour.
- 1" ball valve or 2" fire valve.
- Semi-rigid unbreakable rubber hose with a diameter of 1", 20 - 25 - 30 meters long in accordance with EN 694 E standard.
- 1" - 3 position jet spray nozzle.
- 90 + 270 degree rotating hose reel with central supply.
- Maximum working pressure of the reel is 12 bar, test pressure is 18 bar, minimum bursting pressure is 30 bar.
- Stainless lock and hinge



CABINET DIMENSIONS									
MODEL	HOSE	CASE DIMENSION			DIMENSION INCLUDING SILL			Weight (kg)	Reel Diameter (mm)
		Width (mm)	Height (mm)	Depth (mm)	Width (mm)	Height (mm)	Depth (mm)		
AISK - 20	20m	900	650	230	960	710	230	33	480
AISK - 25	25m	900	650	230	960	710	230	34	480
AISK - 30	30m	900	650	230	960	710	230	35	540

BUILT-IN WITHOUT TUBE COMPARTMENT  
AND GLASS LID WITH RUBBER HOSE

AOCK SERIES



PRODUCT SPECIFICATIONS

- 1" fire cabinet with rubber hose connected by right, left, top or bottom inlets.
- Cabinet body, cover and hose reel made of DKP sheet metal, electrostatically painted 70 micron RAL 3001 red, RAL 9005 black or desired colour.
- 1" ball valve or 2" fire valve.
- Semi-rigid unbreakable rubber hose with a diameter of 1", 20 - 25 - 30 meters long in accordance with EN 694 E standard.
- 1" - 3 position jet spray nozzle.
- 90 + 270 degree rotating hose reel with central supply.
- Maximum working pressure of the reel is 12 bar, test pressure is 18 bar, minimum bursting pressure is 30 bar.
- Stainless lock and hinge



CABINET DIMENSIONS									
MODEL	HOSE	CASE DIMENSION			DIMENSION INCLUDING SILL			Weight (kg)	Reel Diameter (mm)
		Width (mm)	Height (mm)	Depth (mm)	Width (mm)	Height (mm)	Depth (mm)		
AOCK - 20	20m	650	650	230	710	710	230	28,5	480
AOCK - 25	25m	650	650	230	710	710	230	29,5	480
AOCK - 30	30m	650	650	230	710	710	230	30,5	540



BUILT-IN WITHOUT TUBE COMPARTMENT  
AND SHEET LID WITH RUBBER HOSE

AOSK SERIES



- PRODUCT SPECIFICATIONS**
- 1" fire cabinet with rubber hose connected by right, left, top or bottom inlets.
  - Cabinet body, cover and hose reel made of DKP sheet metal, electrostatically painted 70 micron RAL 3001 red, RAL 9005 black or desired colour.
  - 1" ball valve or 2" fire valve.
  - Semi-rigid unbreakable rubber hose with a diameter of 1", 20 - 25 - 30 meters long in accordance with EN 694 E standard.
  - 1" - 3 position jet spray nozzle.
  - 90 + 270 degree rotating hose reel with central supply.
  - Maximum working pressure of the reel is 12 bar, test pressure is 18 bar, minimum bursting pressure is 30 bar.
  - Stainless lock and hinge



		CABINET DIMENSIONS							
		CASE DIMENSION			DIMENSION INCLUDING SILL			Weight (kg)	Reel Diameter (mm)
MODEL	HORTUM	Width (mm)	Height (mm)	Depth (mm)	Width (mm)	Height (mm)	Depth (mm)		
AOSK - 20	20m	650	650	230	710	710	230	28,5	480
AOSK - 25	25m	650	650	230	710	710	230	29,5	480
AOSK - 30	30m	650	650	230	710	710	230	30,5	540





SURFACE-MOUNTED WITH TUBE COMPARTMENT  
AND GLASS LID WITH RUBBER HOSE

SICK SERIES



- PRODUCT SPECIFICATIONS
- 1" fire cabinet with rubber hose connected by right, left, top or bottom inlets.
  - Cabinet body, cover and hose reel made of DKP sheet metal, electrostatically painted 70 micron RAL 3001 red, RAL 9005 black or desired colour.
  - 1" ball valve or 2" fire valve.
  - Semi-rigid unbreakable rubber hose with a diameter of 1", 20 - 25 - 30 meters long in accordance with EN 694 E standard.
  - 1" - 3 position jet spray nozzle.
  - 90 + 270 degree rotating hose reel with central supply.
  - Maximum working pressure of the reel is 12 bar, test pressure is 18 bar, minimum bursting pressure is 30 bar.
  - Stainless lock and hinge



MODEL	HOSE	CABINET DIMENSIONS				
		Width (mm)	Height (mm)	Depth (mm)	Weight (kg)	Reel Diameter (mm)
SICK - 20	20m	950	700	230	33	480
SICK - 25	25m	950	700	230	34	480
SICK - 30	30m	950	700	230	35	540

SURFACE-MOUNTED WITH TUBE COMPARTMENT  
AND SHEET LID WITH RUBBER HOSE

SISK SERIES



- PRODUCT SPECIFICATIONS
- 1" fire cabinet with rubber hose connected by right, left, top or bottom inlets.
  - Cabinet body, cover and hose reel made of DKP sheet metal, electrostatically painted 70 micron RAL 3001 red, RAL 9005 black or desired colour.
  - 1" ball valve or 2" fire valve.
  - Semi-rigid unbreakable rubber hose with a diameter of 1", 20 - 25 - 30 meters long in accordance with EN 694 E standard.
  - 1" - 3 position jet spray nozzle.
  - 90 + 270 degree rotating hose reel with central supply.
  - Maximum working pressure of the reel is 12 bar, test pressure is 18 bar, minimum bursting pressure is 30 bar.
  - Stainless lock and hinge



MODEL	HOSE	CABINET DIMENSIONS				
		Width (mm)	Height (mm)	Depth (mm)	Weight (kg)	Reel Diameter (mm)
SISK - 20	20m	950	700	230	33	480
SISK - 25	25m	950	700	230	34	480
SISK - 30	30m	950	700	230	35	540



## SURFACE-MOUNTED WITHOUT TUBE COMPARTMENT AND GLASS LID WITH RUBBER HOSE

### SOCK SERIES



#### PRODUCT SPECIFICATIONS

- 1" fire cabinet with rubber hose connected by right, left, top or bottom inlets.
- Cabinet body, cover and hose reel made of DKP sheet metal, electrostatically painted 70 micron RAL 3001 red, RAL 9005 black or desired colour.
- 1" ball valve or 2" fire valve.
- Semi-rigid unbreakable rubber hose with a diameter of 1", 20 - 25 - 30 meters long in accordance with EN 694 E standard.
- 1" - 3 position jet spray nozzle.
- 90 + 270 degree rotating hose reel with central supply.
- Maximum working pressure of the reel is 12 bar, test pressure is 18 bar, minimum bursting pressure is 30 bar.
- Stainless lock and hinge



MODEL	HOSE	CABINET DIMENSIONS				
		Width (mm)	Height (mm)	Depth (mm)	Weight (kg)	Reel Diameter (mm)
SOCK - 20	20m	700	700	230	28,5	480
SOCK - 25	25m	700	700	230	29,5	480
SOCK - 30	30m	700	700	230	30,5	540

## SURFACE-MOUNTED WITHOUT TUBE COMPARTMENT AND SHEET LID WITH RUBBER HOSE

### SOSK SERIES



#### PRODUCT SPECIFICATIONS

- 1" fire cabinet with rubber hose connected by right, left, top or bottom inlets.
- Cabinet body, cover and hose reel made of DKP sheet metal, electrostatically painted 70 micron RAL 3001 red, RAL 9005 black or desired colour.
- 1" ball valve or 2" fire valve.
- Semi-rigid unbreakable rubber hose with a diameter of 1", 20 - 25 - 30 meters long in accordance with EN 694 E standard.
- 1" - 3 position jet spray nozzle.
- 90 + 270 degree rotating hose reel with central supply.
- Maximum working pressure of the reel is 12 bar, test pressure is 18 bar, minimum bursting pressure is 30 bar.
- Stainless lock and hinge



MODEL	HOSE	CABINET DIMENSIONS				
		Width (mm)	Height (mm)	Depth (mm)	Weight (kg)	Reel Diameter (mm)
SOSK - 20	20m	700	700	230	28,5	480
SOSK - 25	25m	700	700	230	29,5	480
SOSK - 30	30m	700	700	230	30,5	540



# SEPERATOR

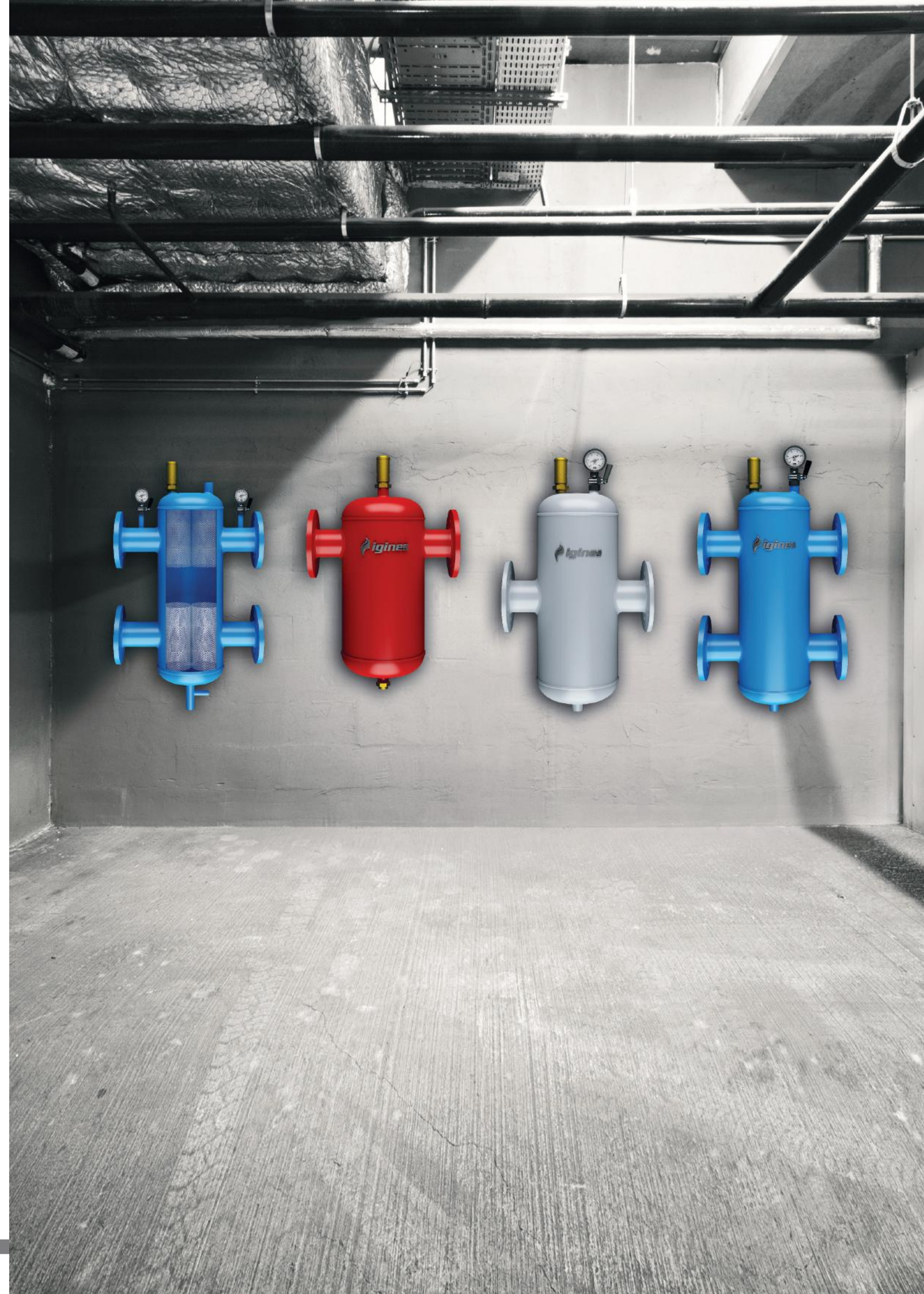
● .....  
**AIR SEPERATOR**

● .....  
**SEDIMENT BLOCKER**

● .....  
**SEDIMENT - AIR SEPERATOR (COUPLED)**

● .....  
**STANDARD HYDRAULIC SEPARATOR**

● .....  
**PACKET HYDRAULIC SEPARATOR**





# AIR SEPERATOR



Exterior View



Inner Section

Designed according to EN 13445-3 standards.

Capacity : 8,5 – 320,0 m<sup>3</sup>/hour  
 Maximum Operating Temperature : 110°C  
 Connecting Flange / Pressure Class : DN32 - DN300 / PN16  
 (Custom production can be made for orders larger than 12")  
 Filter Material : Stainless Steel Filter  
 Outer Surface Protection Paint : Water-Based Industrial Paint

Oxygen, which is molten in water, is released under pressure when its temperature is increased and creates air bubbles in the water. Air bubbles;  
 - Adhere to heat transfer surfaces, preventing heat transfer.  
 - Cause corrosion in heating systems and all installation pipes.  
 - Cause cavitation in pumps and installation elements.  
 - Cause noise and vibration in the installation system.

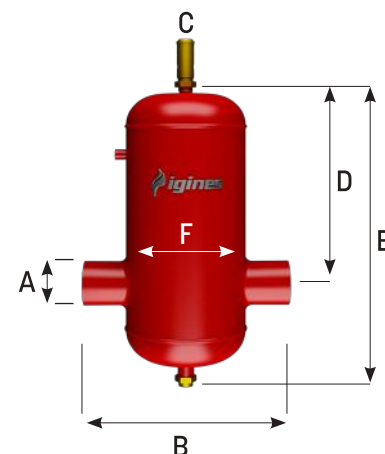
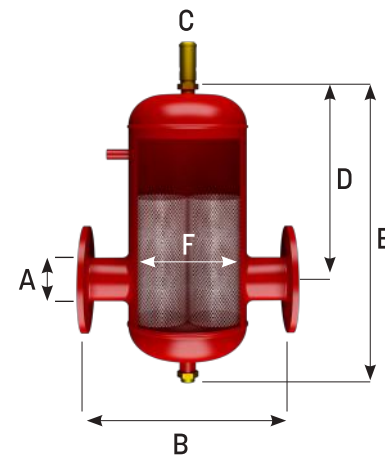
## FEATURES;

Separating the air bubbles contained in the water in the heating systems and cooling systems with a specially designed stainless-steel filter and removes them from the heating system. Thus, problems occurring in installation and heat transfer equipment are prevented and healthy and efficient operation of the system is ensured.

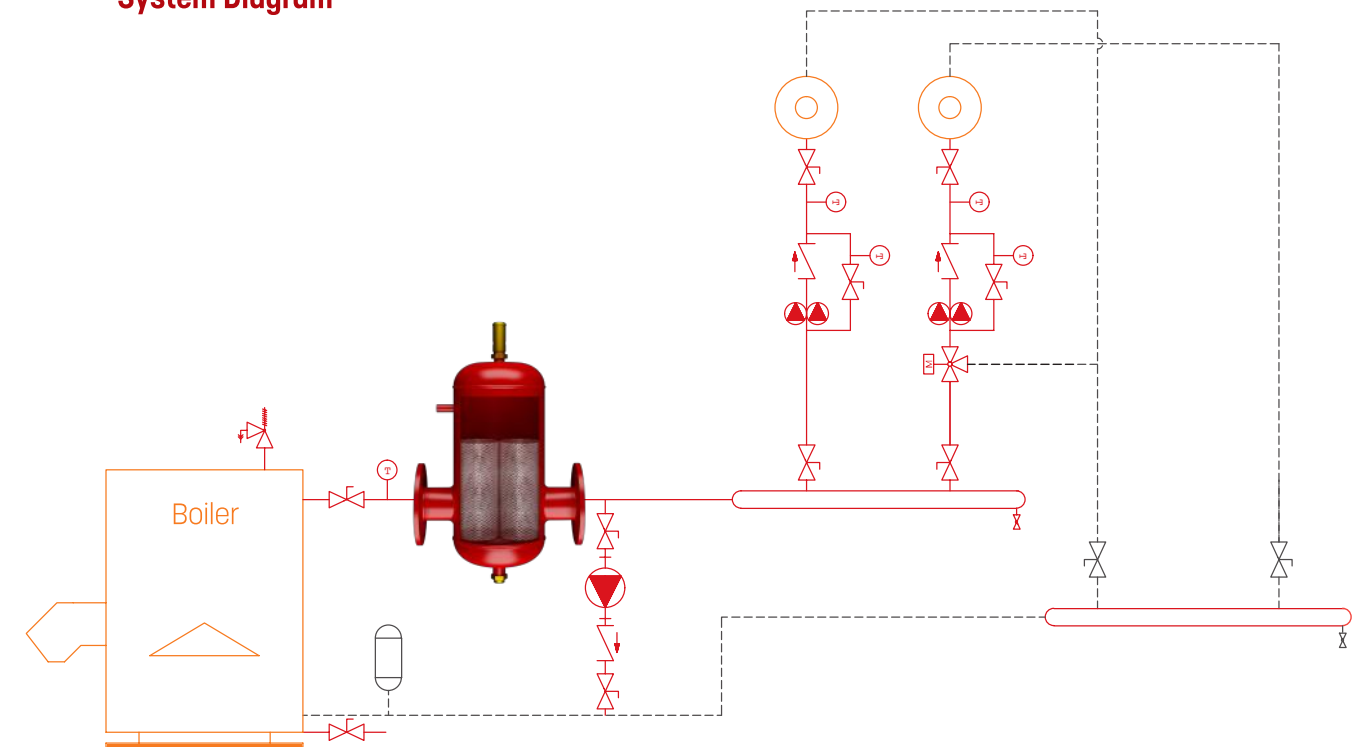
## AREA OF USAGE;

- Boiler systems (casting, steel boilers)
- Cascade boiler systems
- Air conditioning systems
- Cooling systems
- Closed circuit systems such as underfloor heating

## Dimension



## System Diagram



The system diagram given above is an example. It should be installed according to the current standards and directives.

## IGIHA-F FLANGED AIR SEPERATOR

Type	A (DN)	B (mm)	C (inçh)	D (mm)	E (mm)	F (DN)	Weight (kg)	Flow Rate (m <sup>2</sup> /h)
IGIHA-F 32	32	300	1/2	310	430	80	7,5	3
IGIHA-F 40	40	310	1/2	310	430	100	10,5	5
IGIHA-F 50	50	440	1/2	410	550	150	16	9
IGIHA-F 65	65	410	1/2	410	550	150	18	14
IGIHA-F 80	80	495	1/2	430	600	200	24	21
IGIHA-F 100	100	495	1/2	430	600	200	27	35
IGIHA-F 125	125	540	1/2	550	780	250	42	54
IGIHA-F 150	150	600	1/2	550	780	300	51	83

## IGIHA-F WELDED AIR SEPERATOR

Type	A (DN)	B (mm)	C (inçh)	D (mm)	E (mm)	F (DN)	Weight (kg)	Flow Rate (m <sup>2</sup> /h)
IGIHA-K 32	32	300	1/2	310	430	80	6,5	3
IGIHA-K 40	40	310	1/2	310	430	100	7,5	5
IGIHA-K 50	50	440	3/4	410	550	150	12	9
IGIHA-K 65	65	410	3/4	410	550	150	13	14
IGIHA-K 80	80	495	3/4	430	600	200	17	21
IGIHA-K 100	100	495	3/4	430	600	200	22	35
IGIHA-K 125	125	540	1	550	780	250	33	54
IGIHA-K 150	150	600	1	550	780	300	42	83

igines reserves the right to change product specifications, technical dimensions and information and installation schemes without notice.  
 Any information given on this page cannot be copied or used without the permission of igines. In no way can igines be held responsible by showing technical information and schemes as examples.



# SEDIMENT BLOCKER



Exterior View



Inner Section

**TS EN 13445-3** It is designed according to standards.

- Capacity : 8,5 – 320,0 m<sup>3</sup>/hour
- Maximum Operating Temperature : 110°C
- Connecting Flange / Pressure Class : DN32 - DN300 / PN16
- Filter Material : Stainless Steel Filter
- Outer Surface Protection Paint : Water-Based Industrial Paint

Separates sludge, sediments and debris from the equipment and quality of water in heating and cooling systems and allows them to be sent to the drainage.

These impurities in the installation cause abrasion in the elements, complicate heat transfer on heat transfer surfaces and lower efficiency.

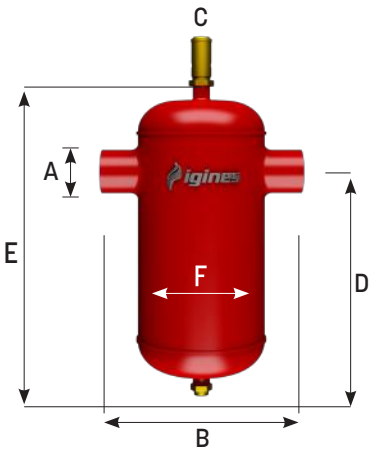
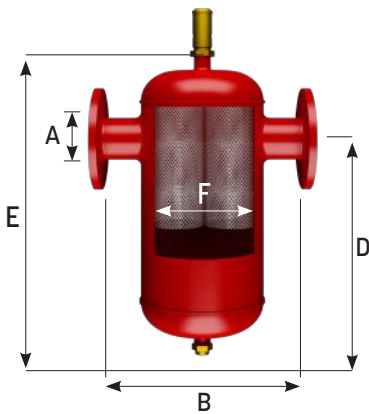
## FEATURES

- Periodic cleaning is often neglected, as cleaning and maintenance of classic strainers cannot be easily done by the user. This process can be done very easily with the ball valve located on the bottom of the IGINES series sediment blockers.
- Stainless steel filter is used inside the IGINES series sediment blockers.
- The need for periodic cleaning is much less due to the fact that the volume of the sediment blocker is very large than the classical types.

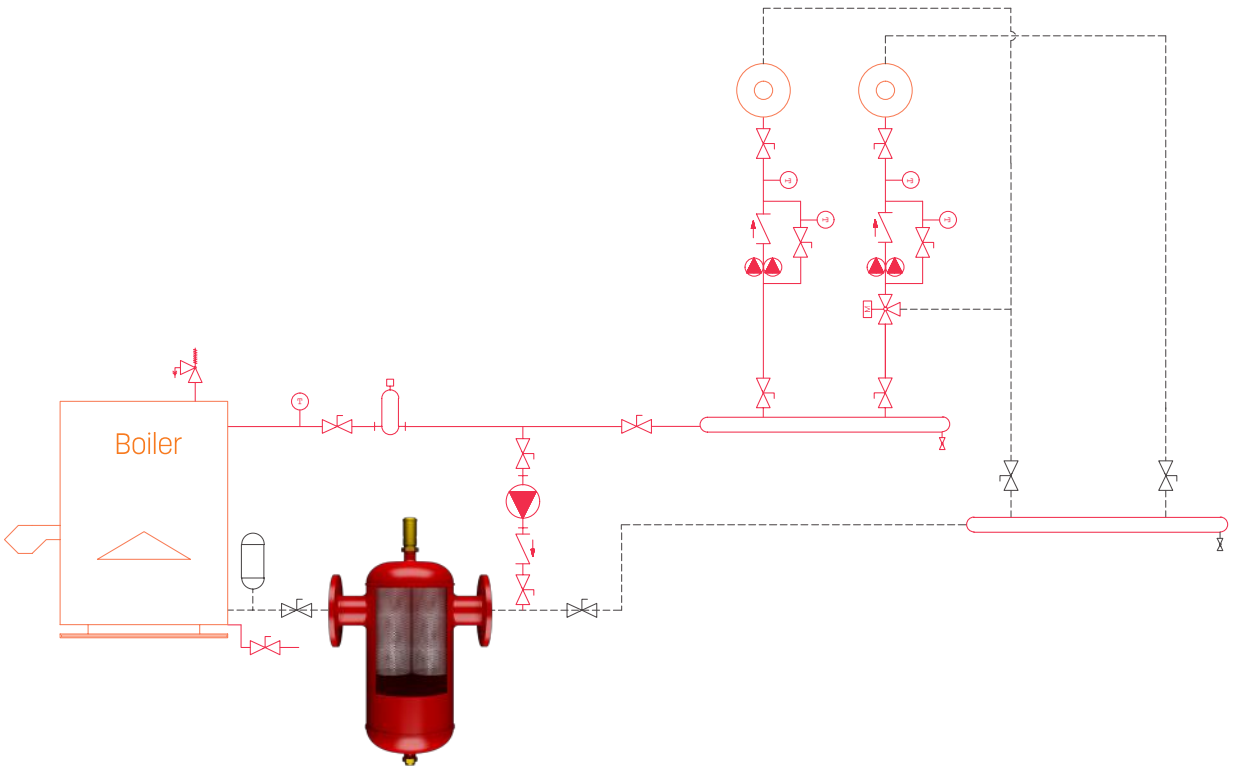
## AREA OF USAGE;

- Boiler systems (casting, steel boilers)
- Cascade boiler systems
- Air conditioning systems
- Cooling systems
- Closed circuit systems such as underfloor heating

## Dimension



## System Diagram



The system diagram given above is an example. It should be installed according to the current standards and directives.

## IGITA-F FLANGED SEDIMENT BLOCKER

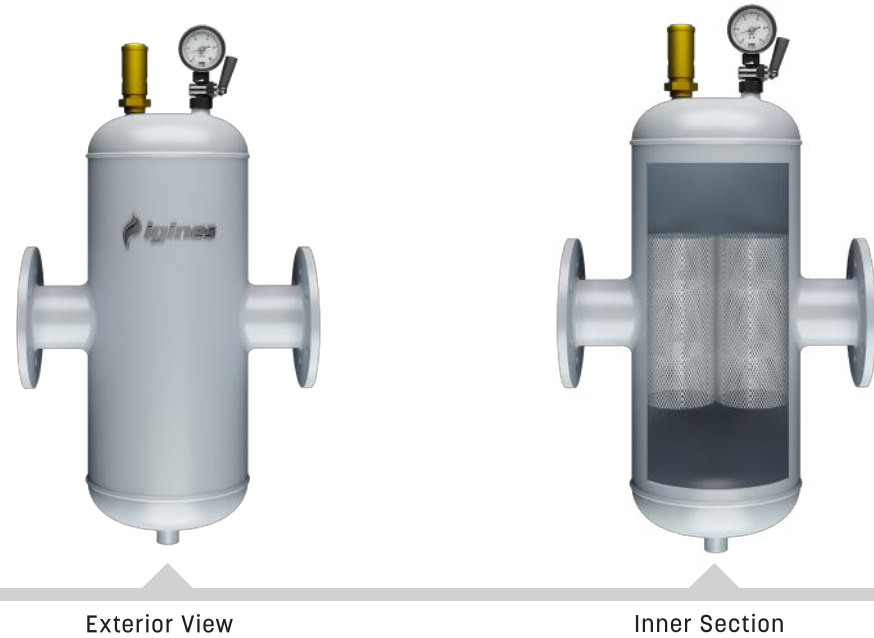
Type	A (DN)	B (mm)	C (inch)	D (mm)	E (mm)	F (DN)	Weight (kg)	Flow Rate (m <sup>3</sup> /h)
IGITA-F 32	32	300	1/2	210	330	80	7,5	3
IGITA-F 40	40	310	1/2	210	330	100	10,5	5
IGITA-F 50	50	440	3/4	310	450	150	16	9
IGITA-F 65	65	410	3/4	310	450	150	18	14
IGITA-F 80	80	495	3/4	335	500	200	24	21
IGITA-F 100	100	495	3/4	335	500	200	27	35
IGITA-F 125	125	540	1	455	680	250	42	54
IGITA-F 150	150	600	1	455	680	300	51	83

## IGITA-K WELDED SEDIMENT BLOCKER

Type	A (DN)	B (mm)	C (inch)	D (mm)	E (mm)	F (DN)	Weight (kg)	Flow Rate (m <sup>3</sup> /h)
IGITA-K 32	32	300	1/2	210	330	80	6,5	3
IGITA-K 40	40	310	1/2	210	330	100	7,5	5
IGITA-K 50	50	440	3/4	310	450	150	12	9
IGITA-K 65	65	410	3/4	310	450	150	13	14
IGITA-K 80	80	495	3/4	335	500	200	17	21
IGITA-K 100	100	495	3/4	335	500	200	22	35
IGITA-K 125	125	540	1	455	680	250	33	54
IGITA-K 150	150	600	1	455	680	300	42	83



# SEDIMENT - AIR SEPERATOR (COUPLED)



TS EN 13445-3 It is designed according to standards.

- Capacity : 8,5 - 320,0 m<sup>3</sup>/hour
- Maximum Operating Temperature : 110°C
- Connecting Flange / Pressure Class: DN32 - DN300 / PN16
- Filter Material : Stainless Steel Filter
- Outer Surface Protection Paint : Water-Based Industrial Paint

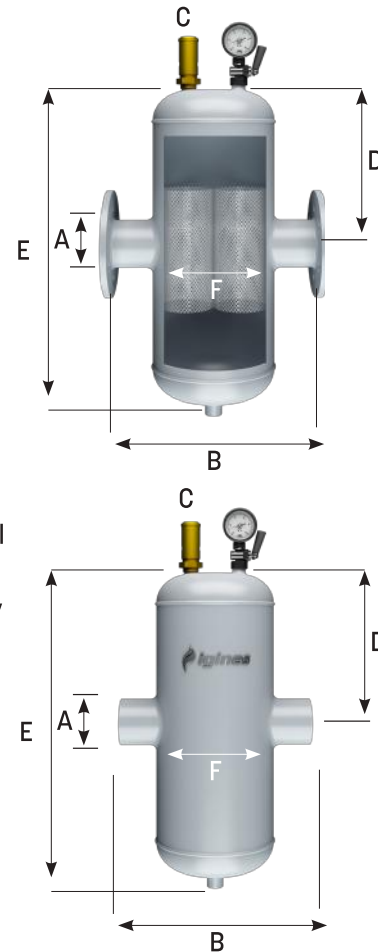
## FEATURES

- It is designed to perform two functions together to eliminate problems caused by sediment, sludge and debris, as well as problems caused by air bubbles in the system with a single device. It saves costs and space due to its dual function.
- It can be safely used in systems where sediment blocker and air separator units have no possibility to use separately.
- The correct disposal of air, sediment and debris in a heating system ensures that both the system and individual parts increase their efficiency and physical life.
- It performs air discharge and sediment blocking in the system simultaneously in the same unit. Automatically evacuates the air. Thanks to its large reservoir, the sediment cleaning period is long.

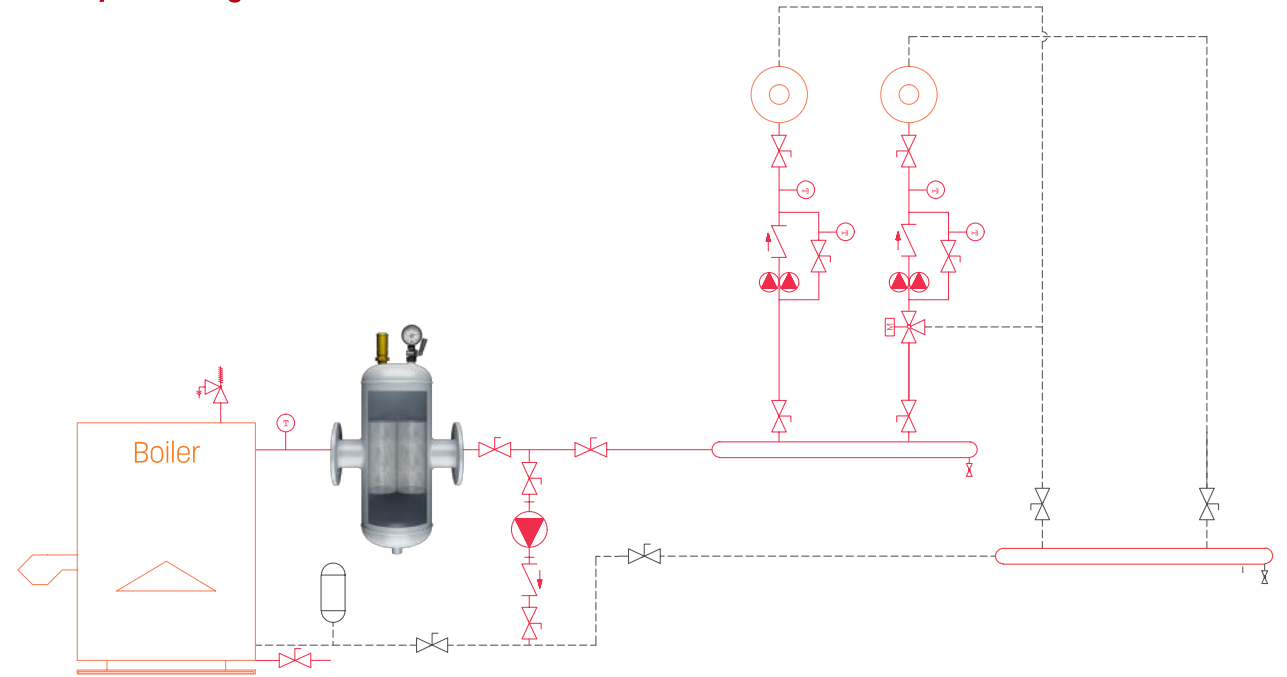
## AREA OF USAGE;

- Boiler systems (casting, steel boilers)
- Cascade boiler systems
- Air conditioning systems
- Cooling systems
- Closed circuit systems such as underfloor heating

## Dimension



## System Diagram



The system diagram given above is an example. It should be installed according to the current standards and directives.

## IGITH-F FLANGED SEDIMENT - AIR SEPERATOR (COUPLED)

Type	A (DN)	B (mm)	C (inch)	D (mm)	E (mm)	F (DN)	Weight (kg)	Flow Rate (m <sup>3</sup> /h)
IGITH-F 32	32	300	1/2	215	430	80	7,5	3
IGITH-F 40	40	310	1/2	215	430	100	10,5	5
IGITH-F 50	50	440	3/4	275	550	150	16	9
IGITH-F 65	65	410	3/4	275	550	150	18	14
IGITH-F 80	80	495	3/4	300	600	200	24	21
IGITH-F 100	100	495	3/4	300	600	200	27	35
IGITH-F 125	125	540	1	390	780	250	42	54
IGITH-F 150	150	600	1	390	780	300	51	83

## IGITH-K WELDED SEDIMENT - AIR SEPERATOR (COUPLED)

Type	A (DN)	B (mm)	C (inch)	D (mm)	E (mm)	F (DN)	Weight (kg)	Flow Rate (m <sup>3</sup> /h)
IGITH-K 32	32	300	1/2	215	430	80	6,5	3
IGITH-K 40	40	310	1/2	215	430	100	7,5	5
IGITH-K 50	50	440	3/4	275	550	150	12	9
IGITH-K 65	65	410	3/4	275	550	150	13	14
IGITH-K 80	80	495	3/4	300	600	200	17	21
IGITH-K 100	100	495	3/4	300	600	200	22	35
IGITH-K 125	125	540	1	390	780	250	33	54
IGITH-K 150	150	600	1	390	780	300	42	83



# STANDARD HYDRAULIC SEPARATOR



Exterior View



Inner Section

**TS EN 13445-3** It is designed according to standards.

Capacity	: 9,0 - 420,0 m <sup>3</sup> /sa
Maximum Operating Temperature	: 110°C
Connecting Flange / Pressure Class	: DN32 - DN300 / PN16
Filter Material	: Perforated Turbulence Plate
Outer Surface Protection Paint	: Water-Based Industrial Paint

## FEATURES;

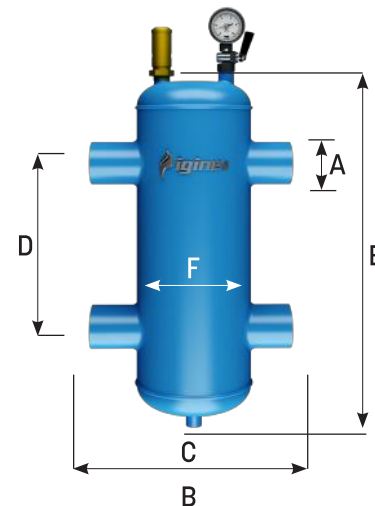
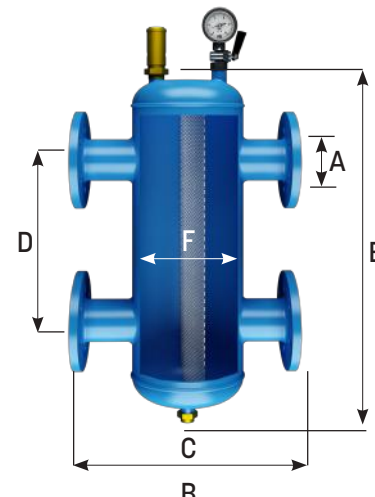
The fluid used in the installation loses heat when returning from the system to the boiler, thermal expansion occurs in the boiler as a result of heat loss. The life of the boiler is shortened.

The main task of IGINES HYDRAULIC SEPARATOR is to reduce heat imbalances by mixing the cooled water from the installation with hot water coming from the boiler.

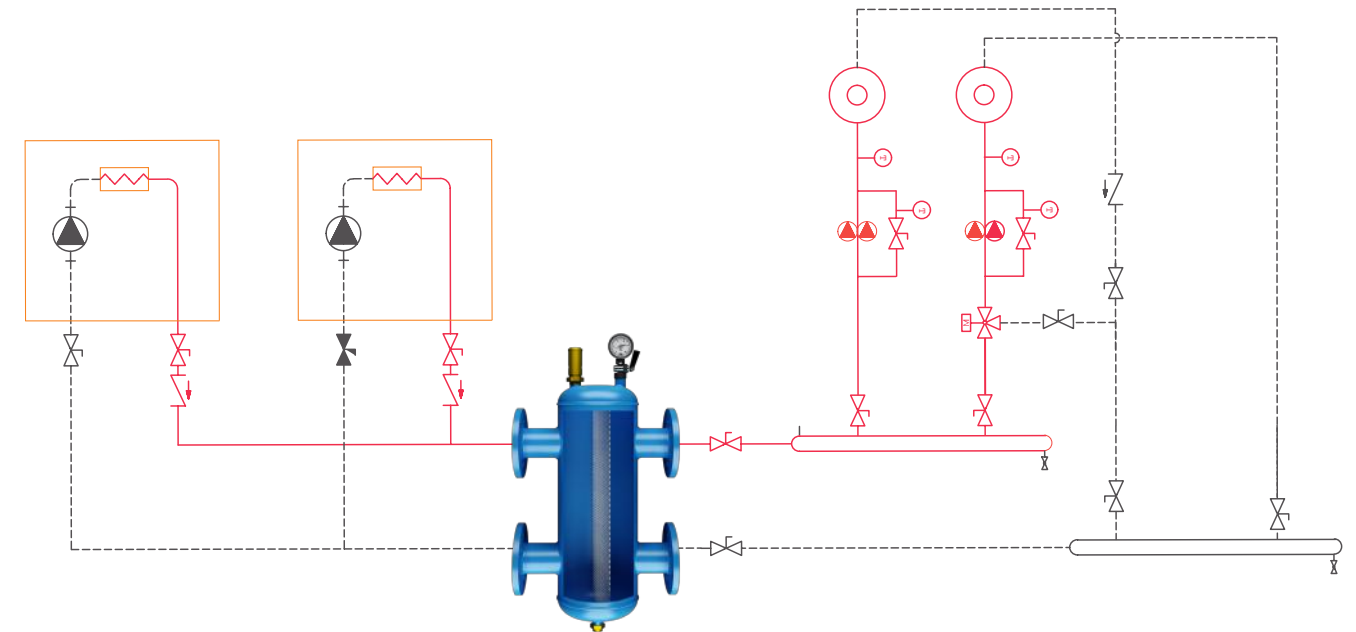
## AREA OF USAGE;

- When energy generated and energy used systems need to be separated from each other hydraulically.
- In systems with multiple energy generator (cascade system),
- In order to balance possible pressure differences in systems where multiple pumps and heating circuits,
- In cases where the energy is produced and used in different circulations,
- Where warming supply and demand fluctuates continuously.

## Dimension



## System Diagram



The system diagram given above is an example. It should be installed according to the current standards and directives.

## IGIDK-F FLANGED STANDARD HYDRAULIC SEPARATOR

Type	A (DN)	B (mm)	C (inch)	D (mm)	E (mm)	F (DN)	Weight (kg)	Flow Rate (m <sup>3</sup> /h)
IGIDK-F 32	32	250	1/2	240	380	65	10	3
IGIDK-F 40	40	300	1/2	260	430	80	12	5
IGIDK-F 50	50	310	3/4	360	580	100	18	9
IGIDK-F 65	65	410	3/4	420	680	125	25	18
IGIDK-F 65	65	440	1	420	680	150	29	18
IGIDK-F 80	80	495	1	660	1000	150	43	28
IGIDK-F 100	100	495	1	690	1090	200	55	56
IGIDK-F 125	125	540	1 1/4	850	1390	250	72	75
IGIDK-F 150	150	600	1 1/2	850	1390	300	78	110
IGIDK-F 150	150	600	2	850	1390	350	86	110

## IGIDK-F WELDED STANDARD HYDRAULIC SEPARATOR

Type	A (DN)	B (mm)	C (inch)	D (mm)	E (mm)	F (DN)	Weight (kg)	Flow Rate (m <sup>3</sup> /h)
IGIDK-K 32	32	250	1/2	240	380	65	4	3
IGIDK-K 40	40	300	1/2	260	430	80	6	5
IGIDK-K 50	50	310	3/4	360	580	100	10	9
IGIDK-K 65	65	410	3/4	420	680	125	16	18
IGIDK-K 65	65	440	1	420	680	150	22	18
IGIDK-K 80	80	495	1	660	1000	150	30	28
IGIDK-K 100	100	495	1	690	1090	200	41	56
IGIDK-K 125	125	540	1 1/4	850	1390	250	53	75
IGIDK-K 150	150	600	1 1/2	850	1390	300	56	110
IGIDK-K 150	150	600	2	850	1390	350	64	110

igines reserves the right to change product specifications, technical dimensions and information and installation schemes without notice. Any information given on this page cannot be copied or used without the permission of igines. In no way can igines be held responsible by showing technical information and schemes as examples.



# PACKET HYDRAULIC SEPARATOR

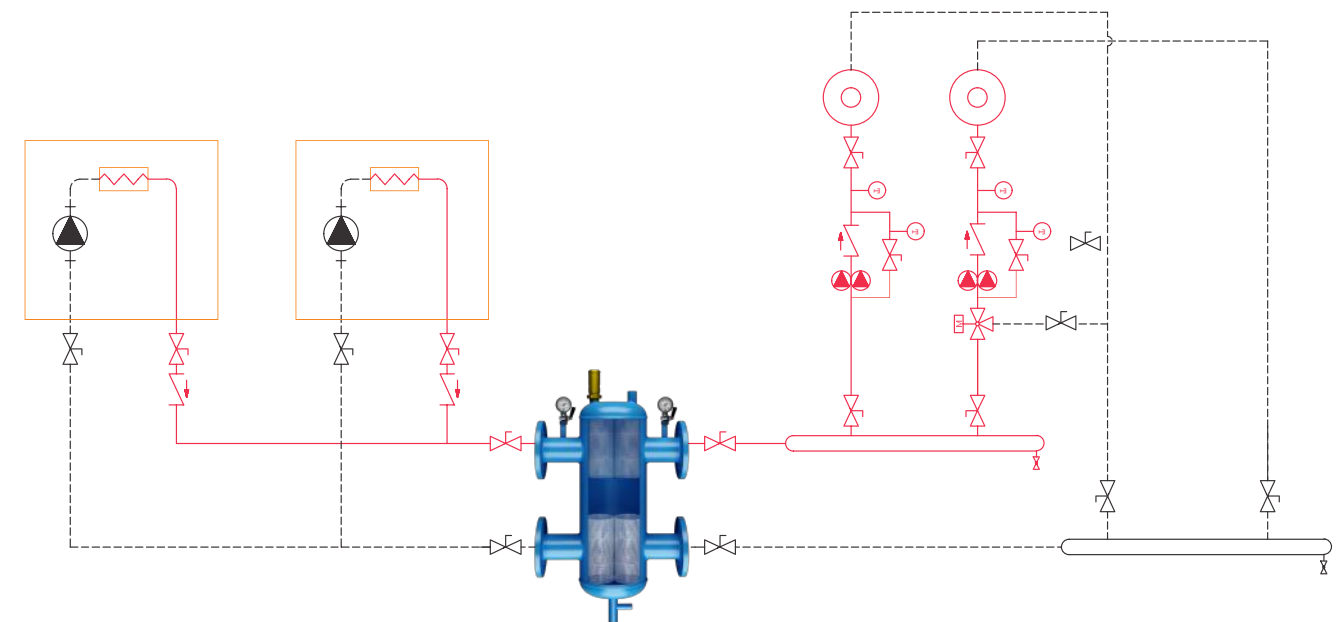


Exterior View



Inner Section

## System Diagram



The system diagram given above is an example. It should be installed according to the current standards and directives.

**TS EN 13445-3** It is designed according to standards.

Capacity	: 9,0 - 420,0 m <sup>3</sup> /sa
Maximum Operating Temperature	: 110°C
Connecting Flange / Pressure Class	: DN32 - DN300 / PN16
Filter Material	: Perforated Turbulence Plate
Outer Surface Protection Paint	: Water-Based Industrial Paint

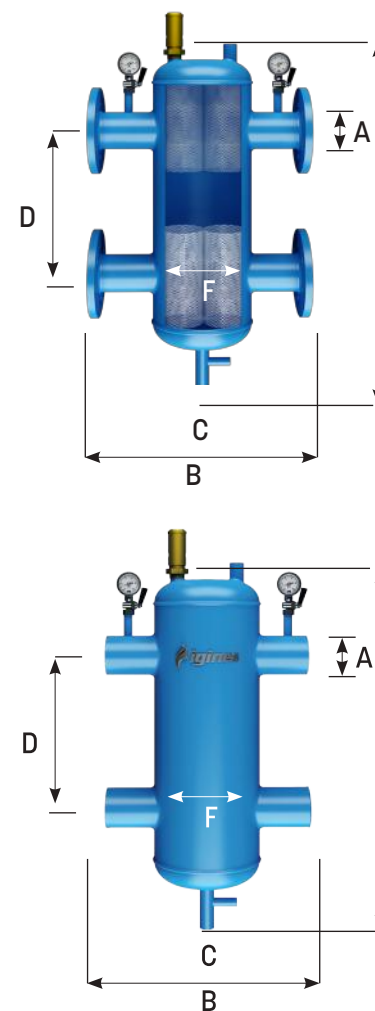
### FEATURES

- In addition to the benefits of the hydraulic separator in the system, it also provides automatic air evacuation, sediment and debris blocking functions.
- Packet hydraulic separator saves cost and labour as it alone performs all three of the combined functions of standard hydraulic separator, air separator and sediment blocking devices, while also saving the space required for air separator and sediment holder.
- The use of the packet hydraulic separator prevents hydraulic imbalance.
- It prevents excessive loading on pumps or boilers and damages that may result from this load.
- The heat transfer, which is sensitively improved, enables more qualified output from the automation system.
- Eliminates pressure and circulation imbalances in the system.

### AREA OF USAGE;

- Boiler systems (casting, steel boilers)
- Cascade boiler systems
- Air conditioning systems
- Cooling systems
- Closed circuit systems such as underfloor heating

### Dimension



## IGIPD-F FLANGED PACKET HYDRAULIC SEPARATOR

Type	A (DN)	B (mm)	C (inch)	D (mm)	E (mm)	F (DN)	Weight (kg)	Flow Rate (m <sup>2</sup> /h)
IGIPD-F 32	32	250	1/2	240	380	65	10	3
IGIPD-F 40	40	300	1/2	260	430	80	12	5
IGIPD-F 50	50	310	3/4	360	580	100	18	9
IGIPD-F 65	65	410	3/4	420	680	125	25	18
IGIPD-F 65	65	440	1	420	680	150	29	18
IGIPD-F 80	80	495	1	660	1000	150	43	28
IGIPD-F 100	100	495	1	690	1090	200	55	56
IGIPD-F 125	125	540	1 1/4	850	1390	250	72	75
IGIPD-F 150	150	600	1 1/2	850	1390	300	78	110
IGIPD-F 150	150	600	2	850	1390	350	86	110

## IGIPD-K WELDED PACKET HYDRAULIC SEPARATOR

Type	A (DN)	B (mm)	C (inch)	D (mm)	E (mm)	F (DN)	Weight (kg)	Flow Rate (m <sup>2</sup> /h)
IGIPD-K 32	32	250	1/2	240	380	65	4	3
IGIPD-K 40	40	300	1/2	260	430	80	6	5
IGIPD-K 50	50	310	3/4	360	580	100	10	9
IGIPD-K 65	65	410	3/4	420	680	125	16	18
IGIPD-K 65	65	440	1	420	680	150	22	18
IGIPD-K 80	80	495	1	660	1000	150	30	28
IGIPD-K 100	100	495	1	690	1090	200	41	56
IGIPD-K 125	125	540	1 1/4	850	1390	250	53	75
IGIPD-K 150	150	600	1 1/2	850	1390	300	56	110
IGIPD-K 150	150	600	2	850	1390	350	64	110

igines reserves the right to change product specifications, technical dimensions and information and installation schemes without notice. Any information given on this page cannot be copied or used without the permission of igines. In no way can igines be held responsible by showing technical information and schemes as examples.



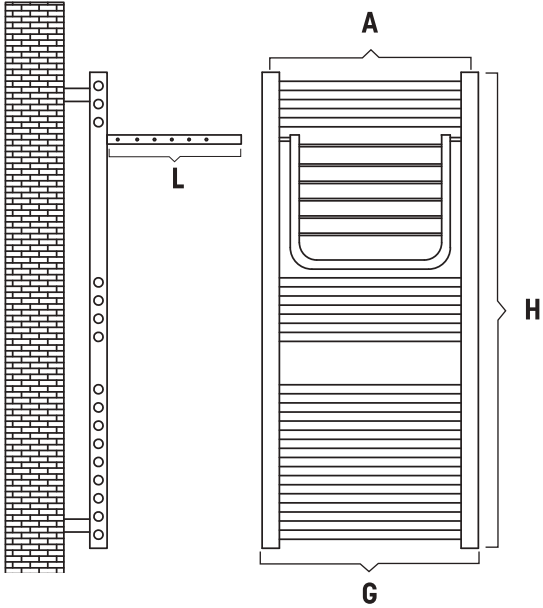
# TOWEL RADIATORS

MOVENS  
(HEATED TOWEL RACK)

## MOVENS TOWEL RADIATORS (HEATED TOWEL RACK)

With the *igines* functional next generation towel radiators (heated towel rack) you can warm your bathroom and dry your towels and bathrobes. You can use it in your home not only in the bathroom, but also in your kitchen, hallway and other rooms. We offer 5 colours and 4 kinds of different dimension options to our valued customers.

The *igines*  **Movens Series** towel radiators (heated towel rack) with solid electrostatic paint, aesthetic appearance and ergonomic use are sold with mounting apparatus and can be assembled easily.



DIMENSIONS OF TOWEL RADIATORS								
MODEL	G mm	H mm	A mm	L mm	Number of Pipes	Thermal Power kcal/h	Water Capacity litre	Net Weight kg
IGI-HMO 50/82	500	820	460	300	12	372	3,87	6,00
IGI-HMO 50/110	500	1100	460	300	17	465	3,27	8,25
IGI-HMO 60/82	600	820	560	300	12	415	4,30	6,75
IGI-HMO 60/110	600	1100	560	300	17	506	5,95	8,90





# DIMENSIONS OF TOWEL RADIATORS (HEATED TOWEL RACK) STANDARD

## STANDARD TOWEL RADIATORS (HEATED TOWEL RACK)

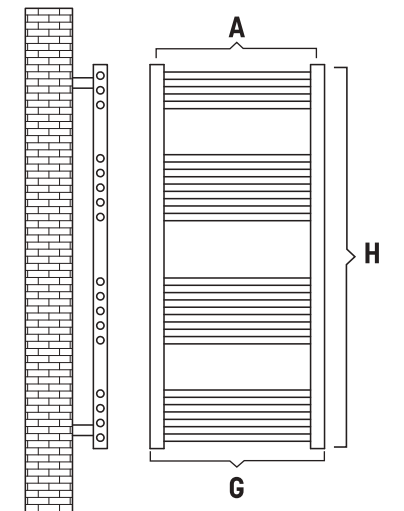


**igines** next generation towel radiators (heated towel rack), you can warm your bathroom and dry your towels and bathrobes. You can use it in your home not only in the bathroom, but also in your kitchen, hallway and other rooms. We offer 6 colours and 8 kinds of different dimension options to our valued customers.

The **igines** Movens Series towel radiators (heated towel rack) with solid electrostatic paint, aesthetic appearance and ergonomic use are sold with mounting apparatus and can be assembled easily.

### STANDARD TOWEL RADIATORS

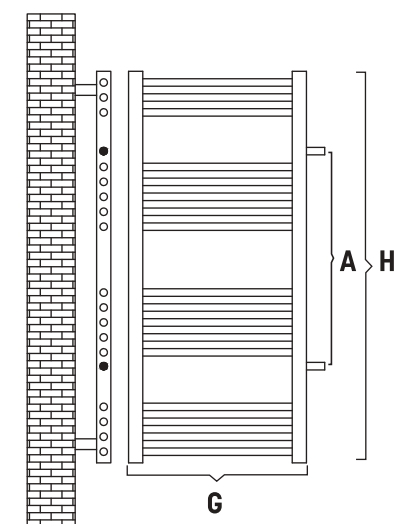
DIMENSIONS OF TOWEL RADIATORS							
MODEL	G mm	H mm	A mm	Number of Pipes	Thermal Power kcal/h	Water Capacity litre	Net Weight kg
IGI-HST 40/70	400	700	360	10	248	2,6	3
IGI-HST 40/100	400	1000	360	14	368	3,6	4,1
IGI-HST 50/70	500	700	460	10	298	3,1	3,5
IGI-HST 50/100	500	1000	460	14	382	4,3	5
IGI-HST 50/140	500	1400	460	20	614	6,2	7,1
IGI-HST 60/70	600	700	560	10	336	3,5	4
IGI-HST 60/100	600	1000	560	14	416	4,9	5,6
IGI-HST 60/140	600	1400	560	20	685	7	8



### SLEEVED TOWEL RADIATORS

DIMENSIONS OF TOWEL RADIATORS							
MODEL	G mm	H mm	A mm	Number of Pipes	Thermal Power kcal/h	Water Capacity litre	Net Weight kg
IGI-HMA 40/70	400	700	540	11	273	2,9	4,00
IGI-HMA 50/70	500	700	540	11	328	3,41	4,75
IGI-HMA 50/110	500	1100	540	17	465	5,27	6,95
IGI-HMA 60/70	600	700	540	11	370	3,85	5,35
IGI-HMA 60/110	600	1100	540	17	506	5,95	8,25

**Note:** Collector cabinets are produced in optional colours and different dimensions





# COLLECTOR CABINET

**igines** Collector Cabinets are electrostatically painted. It has a modern and aesthetic appearance. You can safely use it for many years without rusting and rotting.

MODEL	CABINET DIMENSIONS			
	Width mm	Height mm	Depth mm	Net Weight kg
COLLECTOR C.	400	600	100	4,10
COLLECTOR C.	600	600	100	5,75
COLLECTOR C.	800	600	100	7,40

**Note:** Collector cabinets are produced in optional colours and different dimensions



[www.igines.com](http://www.igines.com)





**Roknes Isı End. Yapı. Malz. İnş. San. Tic. Ltd. Şti.**

**Head Office:** 19 Mayıs Sanayi Sitesi 61. Sok. No:58 Tekkeköy/Samsun/TURKEY

**Factory Address:** Doğankaya Mah. OSB Bölgesi 3. Cadde No:18 Bafra/SAMSUN/TURKEY

**Tel:** +90(362) 440 23 23 **Fax:** +90(362) 440 25 00 **E-mail:** info@roknes.com

**www.ignes.com - www.roknes.com**